

Aspen Daisy



This flower grows in elevations up to 10,000 ft, it grows one to 2 feet high, attract butterflies and grow lush green foliage. It's also a native species to Colorado.

Desert Four O'Clock



The flowers open in the afternoon, is native to Colorado, and provides a colorful burst by the entrance.

Pearly Everlasting



Provides a lighter touch to the green and pink colors that the majority of the landscape make up. It grows up to 10,00 feet, and grows in dry or moist soil.

Purple Fringe



Purple Fringe grows up to 1300 feet, and works well in rock gardens and other areas with limited soil to pull from.

Pussytoes



Named because they resemble cat paws, these are a hardy plant that grow in elevations up to 11,000 feet.

Spotted Gayfeather



Attracts butterflies, adds a pop of color, grows in elevations up to 7,500 feet.

Wild Bergamot



Gives a sweet smelling aroma to the area, and will be placed in front of the building, and around the garbage protectors.

Scotch Pine



A coniferous tree that will provide shade and coverage from sound and give privacy.

Sugar Maple



Grows in acidic soils, well-irrigated, and have a wide variety of color, and are more tolerant to cold weather.

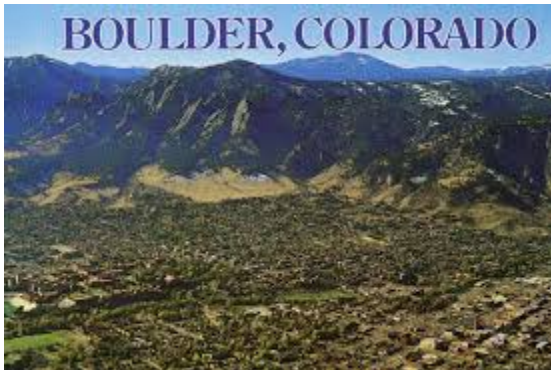
Lilac, Japanese Tree



Has small flowers in late spring and turns a yellow color at all other times.

Although thoroughly researched, the plat and deed information was not found for our specific location. This is due to the fact that we are building in a previously undeveloped area. Once we had selected a location, we had found that it was restricted by Boulder County.

Based on 'visiting' our site location, we found that the traffic flow near our area is relatively fast throughout weekdays, and on weekends. Our location also has a creek running through the back of the property which provides more natural scenery. This also means that we must take this into consideration for flooding, drainage, etc. Our site has clay as its soil type, based on a soil report taken.

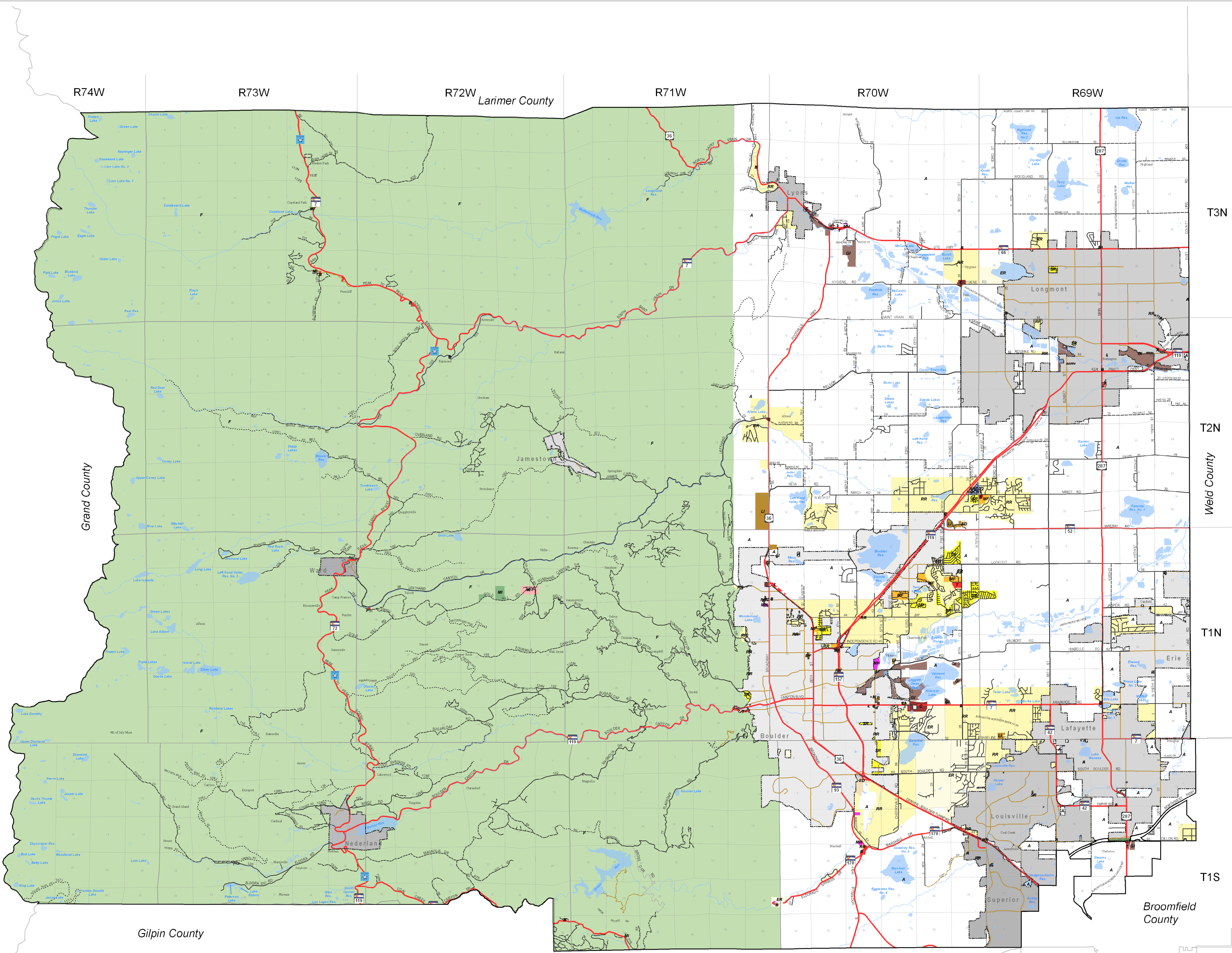




BOULDER COUNTY ZONING MAP

ZONING

- Agricultural
- Business
- Commercial
- Economic Development
- Estate Residential
- Forestry
- General Industrial
- Historic
- Light Industrial
- Multiple Family
- Manufactured Home
- Mountain Institutional
- RC I
- RC II
- Rural Residential
- Suburban Residential
- Transitional



T3N
T2N
T1N
T1S

Weld County
Broomfield County

R74W

R73W

R72W

Laimer County

R71W

R70W

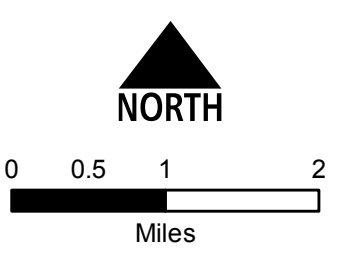
R69W

Grand County

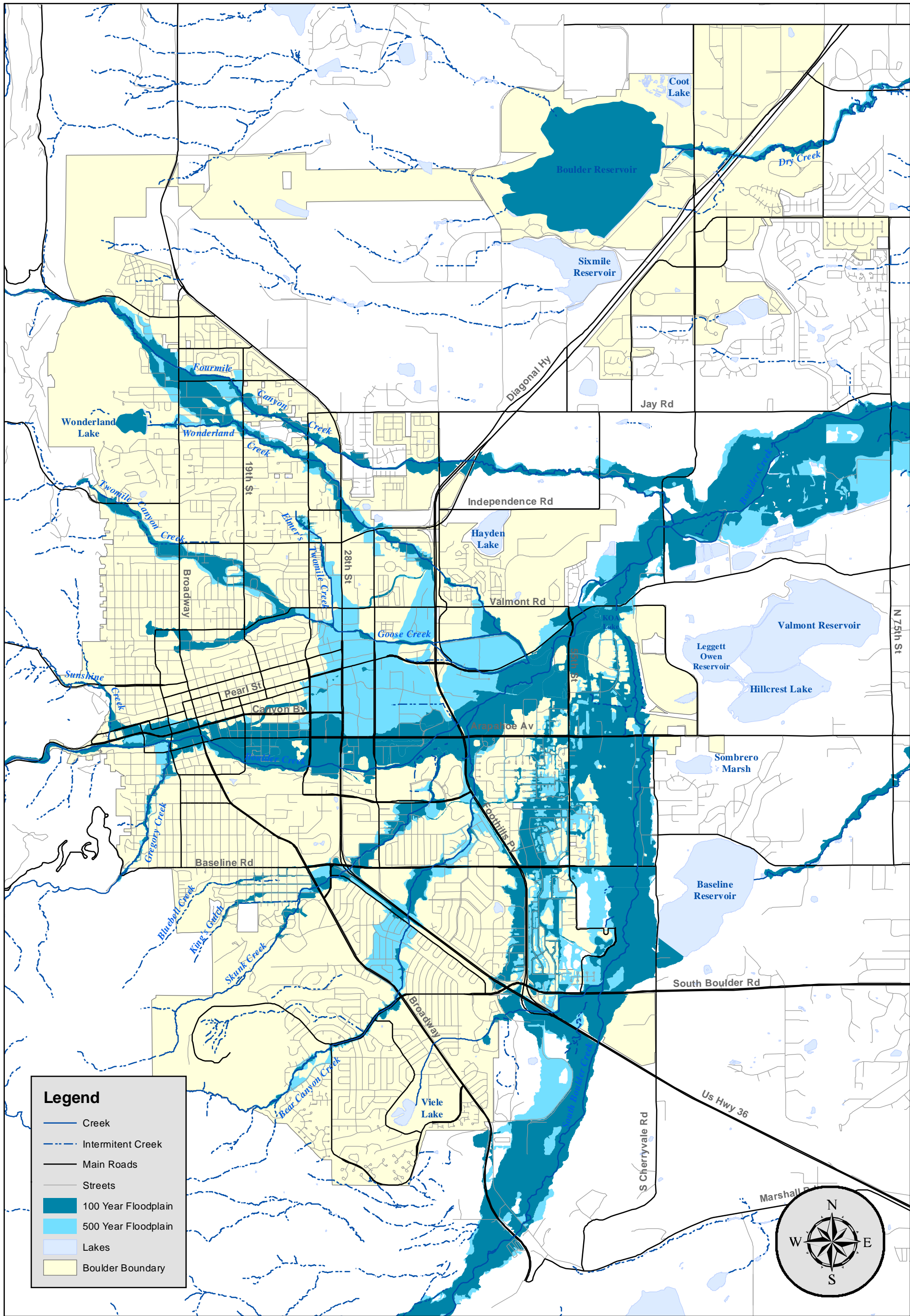
Gilpin County

Jefferson County

This map is for illustrative purposes only. Boulder County Land Use Department makes no warranties regarding the accuracy, completeness, reliability, or suitability of these data. Boulder County Land Use Department disclaims any liability associated with the use or misuse of these data. In accessing and/or relying on these data, the user fully assumes any and all risk associated with this information.



Date: 4/1/2013



Legend

- Creek
- Intermitent Creek
- Main Roads
- Streets
- 100 Year Floodplain
- 500 Year Floodplain
- Lakes
- Boulder Boundary

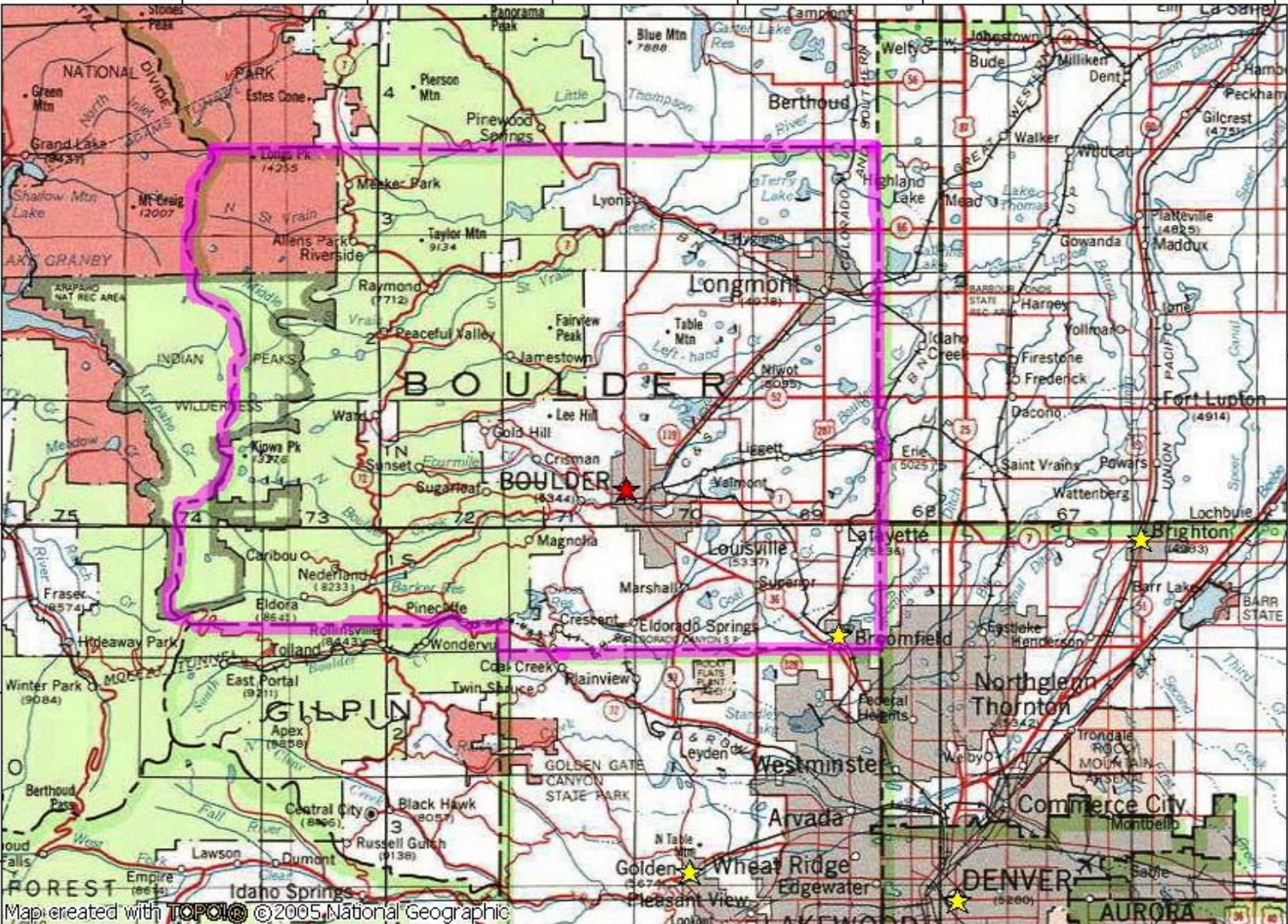
0 0.5 1 2 3 Miles



City of Boulder
100 & 500 Year
Floodplains

105°41'00" W 105°31'00" W 105°21'00" W 105°11'00" W 105°01'00" W WGS84 104°42'00" W

40°14'00" N
40°07'00" N
40°00'00" N
39°53'00" N
39°46'00" N



40°14'00" N
40°07'00" N
40°00'00" N
39°53'00" N
39°46'00" N

105°41'00" W 105°31'00" W 105°21'00" W 105°11'00" W 105°01'00" W WGS84 104°42'00" W